

DrayTek

Vigorous Networking Solution for SMEs



DATABOOK 2024

DrayTek

Founded in 1997, DrayTek Corporation is a Taiwan-based manufacturer of networking equipment and management systems. From ISDN, VDSL to LTE, DrayTek has always been striving to provide SMBs and professional with reliable, fast and secure connections. Our mission is to deliver high-quality and high-integrated networking services at an affordable price and be your reliable networking solution partner.



Contents

Router

Broadband	3-5
xDSL	5-9
PON	8
Cellular	9-10

Wireless AP	12-13
-------------	-------

Switch	15-20
--------	-------

Software / Tools	21-22
------------------	-------

Accessories	23-24
-------------	-------

Feature Matrix	25-37
----------------	-------

Vigor2135 Series

Gigabit Broadband Router



Vigor2135ax

Vigor2135 Series is a broadband firewall and a VPN router. It's equipped with business-grade features, including web content filtering, Route Policy, App-based QoS and lots more, and is perfect for professional smart homes/SOHO users who would like to take full control of their own network.

- Gigabit Ethernet WAN
- 50K NAT Sessions
- 2 Concurrent VPN

	WLAN	VoIP	Fiber
Vigor2135			
Vigor2135 ac/ax	•		
Vigor2135 Vac	•	•	
Vigor2135 FVac	•	•	•

Vigor2136 Series

2.5G Broadband Router



Vigor2136 Series is a 2.5G broadband firewall and a VPN router. It's equipped with business-grade features, including web content filtering, Route Policy, App-based QoS and lots more, and is perfect for professional smart homes/SOHO users who would like to take full control of their own network.

- 2.5Gigabit Ethernet WAN
- 50K NAT Sessions
- 4 Concurrent VPN

	WLAN	VoIP	Fiber
Vigor2136			
Vigor2136 ax	•		
Vigor2136 Vax	•	•	
Vigor2136 FV		•	•
Vigor2136 FVax	•	•	•

Vigor2927 Series

Dual-WAN Security Router



Vigor2927 Series is a dual-Ethernet WAN firewall router, providing load-balancing and failover for your business continuity. Featuring VPN, QoS, route policy, firewall, content filtering, bandwidth management, captive hotspot portal, and a lot more, this is the ultimate router that does it all for SMB.

- Dual Gigabit Ethernet WANs
- 60K NAT Sessions
- 50 Concurrent VPN

	WLAN	VoIP	Fiber
Vigor2927			
Vigor2927ac/ax	•		
Vigor2927Vac	•	•	
Vigor2927F			•

Vigor2962

High Performance Dual-WAN Router



Vigor2962 is a high performance and dynamic firewall router with configurable WAN/LAN ports. With the selection of 2.5GbE port, 1GbE Fiber port, and 2 of 1GbE ports, users can set 2 of the ports as WAN for load balancing/failover purpose.

- 2 Ethernet WANs
- 1 GbE/SFP Combo Port
- 300K NAT Sessions
- 200 Concurrent VPN

	Fiber
Vigor2962	
Vigor2962 F	•

Vigor3912 Series

High Performance 10G Router

Vigor3912 is designed for bandwidth-demanding networks, featuring a 2GHz Quad-Core CPU for fast connection speed, even with multiple connected devices. The router has 8 WAN interface, including 2x 10G SFP+ for fiber connectivity, 2x 2.5G Ethernet, and 4x 1G Ethernet, providing ultra-fast NAT throughput. Port1 to port8 are configurable independently for WAN or LAN.

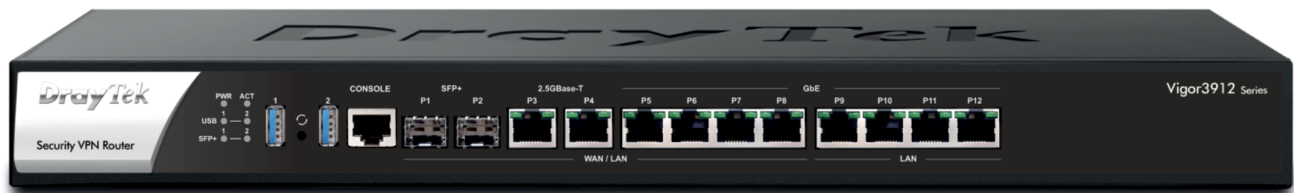
It includes SMB-friendly features like VPN 2FA authentication and VPN from LAN, ensuring a more secure and efficient VPN network.

- 6 Gigabit Ethernet WANs
- 2 10G SFP+ WANs
- 1000K NAT Sessions
- 500 Concurrent VPN
- 8GB RAM (DDR4)

256GB SSD

Vigor3912

Vigor3912S



Vigor167

Super Vectoring Modem

xDSL

Vigor167 is a VDSL2 35b modem/router. It's equipped with 1 RJ-11 port and 2 GbE LAN ports, and delivers download speed up to 300 Mbps. The built-in DSL modem is backward compatible with ADSL2+. Vigor167 is router/modem (bridge) configurable. Vigor167 also supports TR-069 and can be managed by VigorACS3 for zero-touch deployment and remote management.



- 1 xDSL WAN for VDSL2 35b/ADSL2+
- Support VDSL2 35b
- 2 Gigabit Ethernet LAN
- 10k NAT Sessions

Vigor2765 Series

Super Vectoring Security Router



Vigor2765 Series is a VDSL2 35b supervectoring modem, a firewall, and a VPN router. The router has 4x GbE LAN port, one of which is switchable to be a backup WAN interface. It's highly configurable for an abundance of features including web content filtering, bandwidth limit, QoS and lots more, perfect for professional users who would like to take full control of the network.

- xDSL or Gigabit Ethernet WAN
- Built-in 35b/VDSL/ADSL Modem
- 50k NAT Sessions
- 2 Concurrent VPN

	WLAN	VoIP
Vigor2765		
Vigor2765 ac	●	
Vigor2765 Vac	●	●

Vigor2766 Series

G.Fast Security Router



Vigor2766 Series has one G.fast supported DSL WAN, delivering fiber-like link rate up to 1 Gbps, and one configurable Ethernet WAN for backup. The built-in DSL modem is backward compatible with VDSL2 profile 35b supervectoring and ADSL2+. Featuring VPN, QoS, route policy, firewall, content filtering, bandwidth management, captive hotspot portal, and a lot more.

- xDSL or Gigabit Ethernet WAN
- Built-in G.fast/35b/VDSL Modem
- 50k NAT Sessions
- 2 Concurrent VPN

	WLAN	VoIP
Vigor2766		
Vigor2766 ac/ax	●	
Vigor2766 Vac	●	●

Vigor2767 Series

Super Vectoring Security Router



Vigor2767 Series is a VDSL2 35b supervectoring modem, a firewall, and a VPN router. The router has 1x 2.5GbE LAN port which is switchable to be a backup WAN interface. It's highly configurable for an abundance of features including web content filtering, bandwidth limit, QoS and lots more, perfect for professional users who would like to take full control of the network.

- xDSL or Gigabit Ethernet WAN
- Built-in 35b/VDSL/ADSL Modem
- 50k NAT Sessions
- 4 Concurrent VPN

	WLAN	VoIP
Vigor2767		
Vigor2767 ax	●	
Vigor2767 Vax	●	●

Vigor2865 Series

Super Vectoring Security Firewall



Vigor2865 Series is a VDSL2 35b/ADSL2+ Security Firewall router integrating a DSL modem which is compatible with variants of ADSL and VDSL, including profile 35b supervectoring. There is also a Gigabit Ethernet WAN port for broadband connections to share the traffic load or serve as a failover connection.

- xDSL or Gigabit Ethernet WAN
- Built-in 35b/VDSL/ADSL Modem
- 60k NAT Sessions
- 32 Concurrent VPN

	WLAN	VoIP
Vigor2865		
Vigor2865 ac/ax	●	
Vigor2865 Vac	●	●

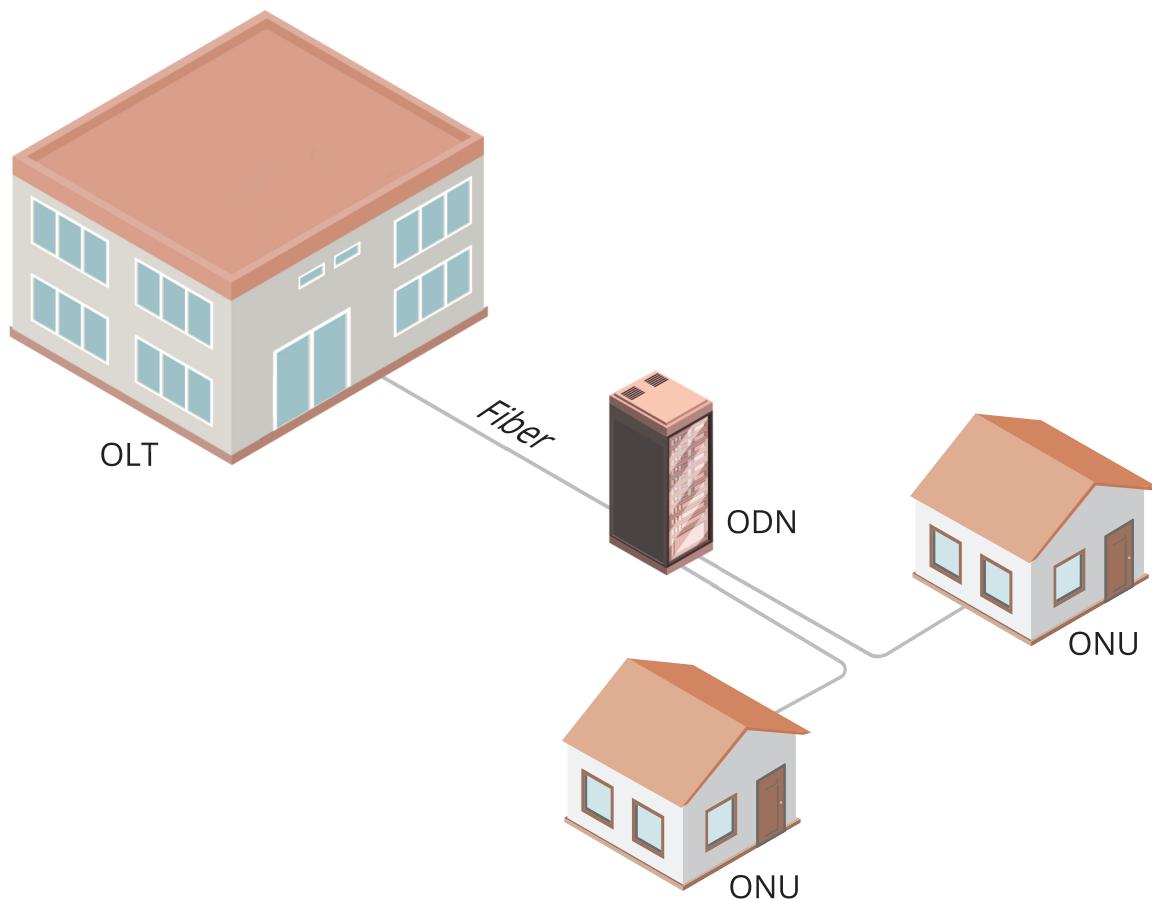
Vigor1100Vax

Single-WAN GPON Router



Vigor1100Vax is designed for fulfilling FTTH and triple play service demand of fixed network operators or cable operators. The box is based on the mature Gigabit GPON technology, which have high ratio of performance to price. It supports multi WAN connection of bridge or route, IPv4 and IPv6 protocol stack, multicast protocol, QoS and firewall function.

- GPON or Gigabit Ethernet WAN
- 50k NAT Sessions
- 2 Concurrent VPN
- 2 FXS



Vigor2620 LTE Series

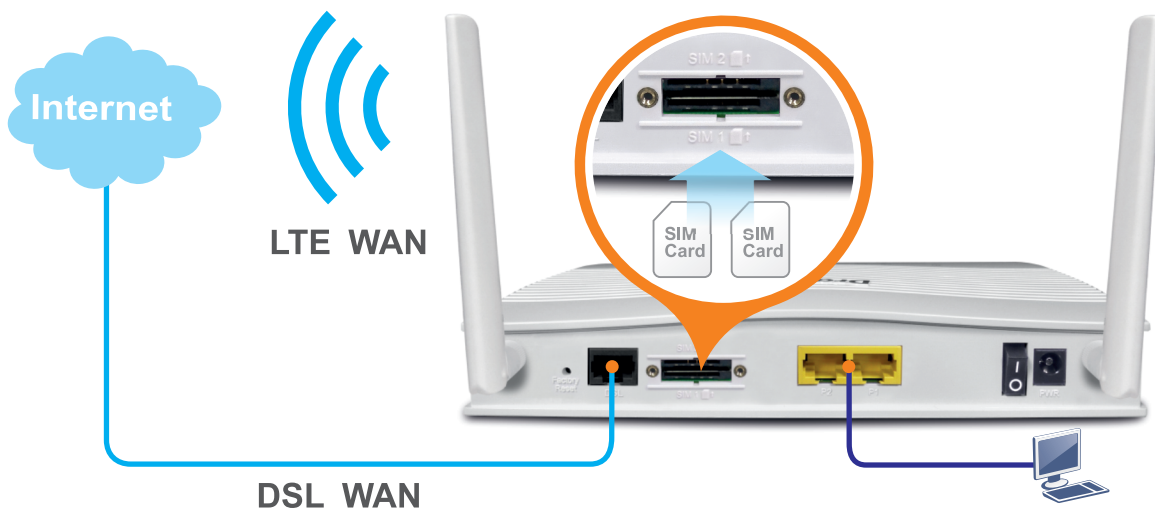
LTE Router



Vigor2620 LTE Series is a VDSL2/ADSL2+ modem router with 2 embedded SIM card slots (1 SIM online at a time) for 4G/LTE failover. It is equipped with 2x Gigabit Ethernet LAN ports, one of which is switchable to an additional backup WAN interface. It offers flexibility for network management, including Port Forwarding, SPI Firewall, Content Filtering, Bandwidth Management, QoS and more.

- LTE, xDSL or GbE WAN
- Built-in VDSL/ADSL & LTE Modem
- 30k NAT Sessions
- 2 Concurrent VPN

	DSL	WLAN
Vigor2620L	•	
Vigor2620Ln	•	•



Vigor2865L Series

Cellular Router



Vigor2865Lax-5G

Vigor2865/2866 LTE Series is a G.fast (2866L)/VDSL2 35b/ADSL2+ firewall router with 2 embedded SIM card slots (1 SIM online at a time) . There is also a Gigabit Ethernet WAN port for broadband connection. Featuring VPN, QoS, route policy, firewall, content filtering, bandwidth management, captive hotspot portal.

- LTE, xDSL or GbE WAN
- Built-in G.fast (2866L)/35b/VDSL & LTE/5G Modem
- 60k NAT Sessions
- 32 Concurrent VPN

	WLAN	4G	5G
Vigor2865L		•	
Vigor2865Lac	•	•	
Vigor2865L-5G		•	•
Vigor2865Lax-5G	•	•	•



Vigor2865Lac

5G/LTE/WCDMA (5G model)

5G Band	n1,3,7,8,20,28,38,40,77,78
5G Max. Data Rate	NR SA: 2.4Gbps (DL) / 900Mbps (UL) NR NSA: 2.8Gbps (DL) / 555Mbps (UL)
LTE FDD Band	B1,3,7,8,20,28
LTE TDD Band	B38,40
LTE Category	Cat19 (DL) / Cat18 (UL)
LTE Max. Data Rate	1.6Gbps (DL) / 200Mbps (UL)
WCDMA (3G) Band	B1,8

LTE/WCDMA (L model)

LTE FDD Band	B1,3,7,8,20,28
LTE TDD Band	B38,40
LTE Category	6
LTE Max. Data Rate	300 Mbps (DL) / 50Mbps (UL)
WCDMA (3G) Band	B1,8

For other band availability, please contact your local DrayTek distributor or us.

Vigor2927L Series

Cellular Router



Vigor2927Lax-5G

Vigor2927 LTE Series is a dual-Ethernet WAN firewall router with 2 embedded SIM card slots (1 SIM online at a time). Featuring VPN, QoS, route policy, firewall, content filtering, bandwidth management, captive hotspot portal, and a lot more, this is the ultimate router that does it all for SMB.

- LTE, Dual Gigabit Ethernet WANs
- Built-in LTE/5G Modem
- 60K NAT Sessions
- 50 Concurrent VPN

	WLAN	4G	5G
Vigor2927L		•	
Vigor2927Lac	•	•	
Vigor2927L-5G		•	•
Vigor2927Lax-5G	•	•	•



Vigor2927Lac

5G/LTE/WCDMA (5G model)

5G Band	n1,3,7,8,20,28,38,40,77,78
5G Max. Data Rate	NR SA: 2.4Gbps (DL) / 900Mbps (UL) NR NSA: 2.8Gbps (DL) / 555Mbps (UL)
LTE FDD Band	B1,3,7,8,20,28
LTE TDD Band	B38,40
LTE Category	Cat19 (DL) / Cat18 (UL)
LTE Max. Data Rate	1.6Gbps (DL) / 200Mbps (UL)
WCDMA (3G) Band	B1,8

LTE/WCDMA (L model)

LTE FDD Band	B1,3,7,8,20,28
LTE TDD Band	B38,40
LTE Category	6
LTE Max. Data Rate	300 Mbps (DL) / 50Mbps (UL)
WCDMA (3G) Band	B1,8

For other band availability, please contact your local DrayTek distributor or us.

VigorAP 805

802.11ax Dual-Band AP



VigorAP 805 is 11ax Cylinder Desktop wireless access point with 2.5 Gigabit LAN port and 1 Gigabit LAN port. With wire-linked link rate up to 2402 Mbps* in 5GHz band and up to 574 Mbps in 2.4GHz band, it's suitable for high density environments. It can be cloud managed by VigorACS, and also act as the mesh Root AP to manage up to 7 mesh node APs in LAN.

- AX3000 Dual-Band
- Cylinder Desktop
- Powered by DC
- 2.5GbE Port + 1GbE Port

*5G maximum wireless speeds may vary depending on regional limitations.

VigorAP 903

802.11ac Dual-Band AP



VigorAP 903 is 11ac Wave 2 dual-band wireless mesh access point with a 5-port LAN switch, which port A1 supports 802.3act PoE-In. VigorAP 903 provides the flexibility and advanced features for professional users to take full management of the wireless network, including the mesh technology, which aims for providing an easy way to expand the wireless network in minutes.

- AC1300 Dual-Band
- Wall/Desktop Mount
- Powered by DC/PoE

VigorAP 906

802.11ax Dual-Band AP



VigorAP 906 is 11ax wall-mount/desktop wireless access point with a 5-port LAN switch. With wire-linked link rate up to 2402 Mbps* in 5GHz band and up to 574 Mbps in 2.4GHz band, it's suitable for high density environments. It can be cloud-managed by VigorACS, and also act as the mesh Root AP to manage up to 7 mesh node APs in LAN.

- AX3000 Dual-Band
- Wall/Desktop Mount
- Powered by DC/PoE

*5G maximum wireless speeds may vary depending on regional limitations.

VigorAP 912C

802.11ac Ceiling-mount AP



VigorAP 912C is a ceiling-mount wireless access point for business networks. It has a capacity of up to 256 concurrent active users, ideal for a high-density environment such as a BYOD workplace. The low-profile appearance and PoE power supply provide the flexibility in deployment.

- AC1300 Dual-Band
- Wall/Ceiling Mount
- Powered by DC/PoE

VigorAP 962C

802.11ax 2.5G Ceiling-mount AP



VigorAP 962C is 11ax Ceiling-mount wireless access point. With wire-liked link rate up to 2402 Mbps* in 5GHz band and up to 574 Mbps in 2.4GHz band, it's suitable for high density environments. It can support up to 256 concurrent clients, making it a perfect choice in high-speed and high-density environments.

- AX3000 Dual-Band
- Wall/Ceiling Mount
- Powered by DC/PoE
- 2.5GbE Port

*5G maximum wireless speeds may vary depending on regional limitations.

VigorAP 1062C

802.11ax Ceiling-mount AP



VigorAP 1062C is a high performance dual-band WiFi6 Access Point, delivering 1.2Gbps in 2.4GHz and 4.8Gbps* in 5GHz. With it's 2.5GbE port and MU-MIMO technology, it can support up to 256 concurrent clients, making it a perfect choice in high-speed and high-density environments.

- AX6000 Dual-Band
- Wall/Ceiling Mount
- Powered by DC/PoE
- 2.5GbE Port

*5G maximum wireless speeds may vary depending on regional limitations.

VigorAP 918R Series

11ac Dual-Band Outdoor AP

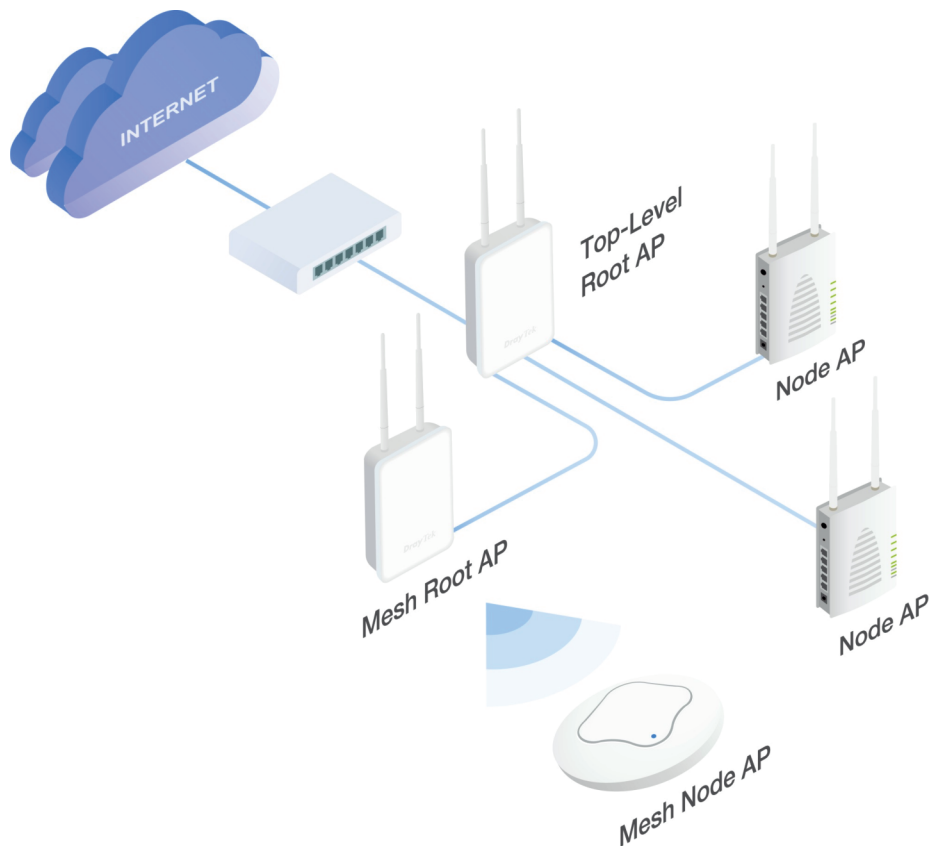


DrayTek VigorAP 918R Series is a compact outdoor wireless access point. It provides combined link rate up to 1.3 Gbps and a capacity of 200+ active users. The series includes an RPD model, which is equipped with a PoE-Out port to deliver connectivity and power to another network device, such as an IP camera, and the internal 5GHz directional patch antenna can enhance the wireless performance for long-range point-to-point connection.

- AC1300 Dual-Band
- Wall/Pole Mount
- Powered by PoE
- IP67 Rated Waterproof

	PoE Out	Directional Antenna
VigorAP 918R		
VigorAP 918RPD	●	●

Root AP for AP Management



VigorSwitch G1080

Smart Lite Gigabit Switch

DrayTek VigorSwitch G1080 is an extremely compact 8-port smart lite Gigabit switch. It provides basic management including 802.1q VLAN, 802.1p CoS QoS, Link Aggregation, Storm Control, and Loop Prevention. Perfect for Smart home/SOHO with needs of network efficiency and security.

- Smart Lite
- 16G Switching Capacity



Web Smart

VigorSwitch G1282/P1282/P1281x

Web Smart Gigabit Switch

VigorSwitch G1282/P1282/P1281x is a Web Smart Gigabit switch that brings network security and stability into mid-sized environments. Equipped with enterprise-level features, including IP Conflict Detection & Prevention, ONVIF Surveillance, and ping watchdog.

- Web Smart
- 56G Switching Capacity
- 1U Rackmount



VigorSwitch G2100/P2100

L2+ Managed Switch

DrayTek VigorSwitch G2100/P2100 is a compact Layer 2+ Managed Gigabit switch well-suited for smart home and branch/remote sites. It has 2x GbE SFP ports, 8x Gigabit Ethernet ports, and 1x console port. Featuring Layer 3 features, including DHCP Server and VLAN Routing. Furthermore with IP Conflict Detection & Prevention, ONVIF Surveillance, ping watchdog and a lot more, this is the balanced switch that brings advanced features into small environments.

- L2+ Managed
- 20G Switching Capacity
- 1U Rackmount



VigorSwitch FX2120

L2+ Managed Switch

VigorSwitch FX2120 is a full 10 Gigabit switch with 12x SFP+ ports for uplink/downlink and 1x console port. It is well-suited for ISP and enterprise network with intensive data transmission. Supporting OpenFlow 1.3, it's also a future-proofed switch that can be operating in either traditional switch or SDN switch mode. It improves local network sustainability and efficiency regardless of the gateway. Furthermore, with IP Conflict Detection & Prevention, ONVIF Surveillance, ping watchdog, and a lot more.

- L2+ Managed
- 240G Switching Capacity
- 1U Rackmount



VigorSwitch Q2121x/PQ2121x

L2+ Managed 2.5GbE Switch

VigorSwitch Q2121x/PQ2121x features 2.5GbE ports for LAN and 10G SFP+ for uplink/downlink. Together with WiFi 6 VigorAPs (e.g., VigorAP 1062C), it brings the full WiFi 6 performance to LAN clients. Supporting advanced Layer 3 features, DHCP Server, and VLAN Routing. The PoE model PQ2121x has 8x 2.5G PoE/PoE+ ports with a power budget of 140 watts.

- L2+ Managed
- 120G Switching Capacity
- 1U Rackmount



VigorSwitch Q2200x/PQ2200xb

L2+ Managed 2.5GbE Switch

VigorSwitch Q2200x series features 2.5GbE ports for LAN and 10G SFP+ for uplink/downlink. Together with WiFi 6 VigorAPs (e.g., VigorAP 1062C), Q2200x series brings the full WiFi 6 performance to LAN clients. Supporting advanced Layer 3 features, DHCP Server and VLAN Routing. The PoE model PQ2200xb has 4 PoE++ ports providing up to 90W per port and 12 PoE+ ports. Supporting advanced Layer 3 features, DHCP Server, and VLAN Routing,

- L2+ Managed
- 160G Switching Capacity
- 1U Rackmount



VigorSwitch G2282x/P2282x

L2+ Managed Switch

VigorSwitch G2282x series is a Layer 2+ Managed 10 Gbps switch. It has 24x Gigabit Ethernet LAN ports and 4x SFP+ 10Gbps Fiber links for uplink/downlink. Besides the fixed AC power input, VigorSwitch 2282x series also provides DC power input as other power source, which helps to ensure uninterrupted operation. Supporting advanced Layer 3 features, including DHCP Server and VLAN Routing.

- L2+ Managed
- 128G Switching Capacity
- Backup DC Power Input
- 1U Rackmount



VigorSwitch Q2300x/PQ2300xb

L2+ Managed 2.5GbE Switch

VigorSwitch Q2300x series is a Layer 2+ Managed 10 Gbps switch. It has 24x 2.5GbE LAN ports and 6x SFP+ 10Gbps Fiber links for uplink/downlink. Besides the fixed AC power input, it also provides DC power input as other power source, which helps to ensure uninterrupted operation. It improves network efficiency and helps your LAN network to work continuously even when the gateway is offline, which is ideal to be placed as the core switch in SME/SMB.

- L2+ Managed
- 240G Switching Capacity
- Backup DC Power Input
- 1U Rackmount



VigorSwitch G2540xs/P2540xs

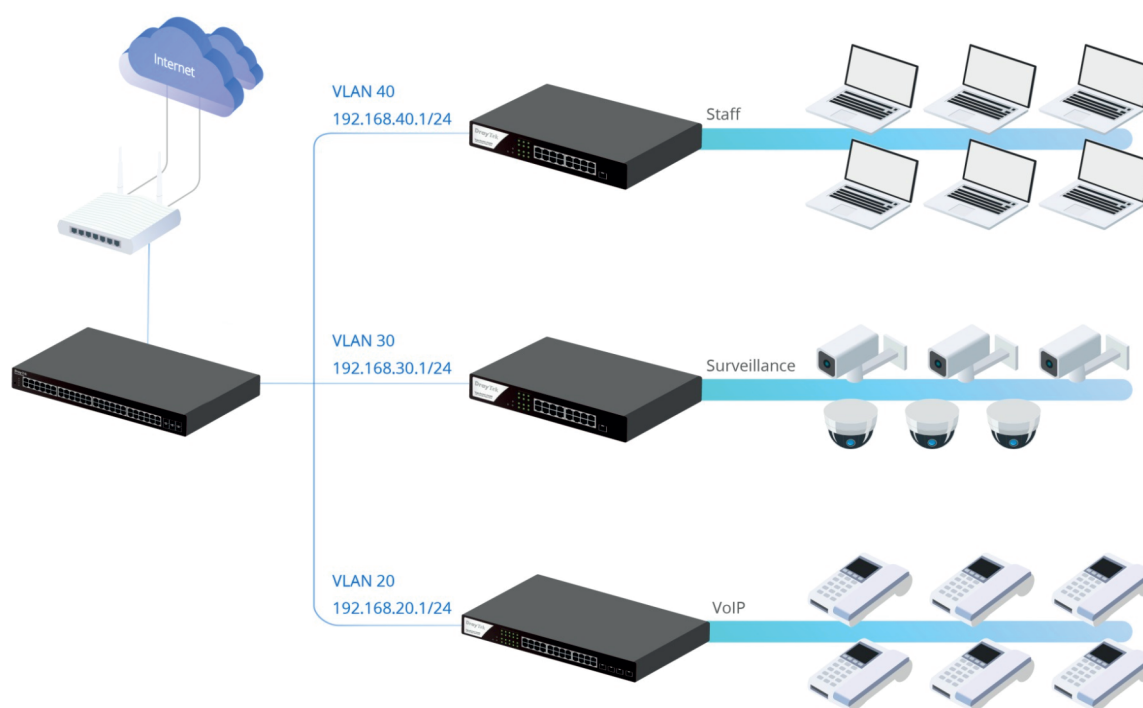
L2+ Managed Switch

DrayTek VigorSwitch 2540x series is a Layer 2+ Managed 10 Gbps switch with 48 Gigabit Ethernet ports and 6 x SFP+ 10Gbps Fiber links. Supporting advanced Layer 3 features, DHCP Server and VLAN Routing. Moreover, it supports VLAN routing to route the inter-VLAN traffic directly, shares loads of the router, and improve overall network performance.

- L2+ Managed
- 216G Switching Capacity
- 1U Rackmount



DHCP Server & VLAN Routing



DAC-CX10

10G SFP+ Direct Attach Passive Copper Cable

DAC-CX10 is designed for providing high-speed data link via copper wire and support both Gigabit and 10 Gigabit Ethernet data rate, compatible to SFP+ MSA to meet Fiber Channel industry standard requirements to ensure performance and reliability.

It is available in 2 models, **DAC-CX10-1m** (Length:1m) and **DAC-CX10-3m** (Length:3m).



DAM-FX10-20K Series

10G SFP+ Module

DAM-FX10-20K Series is an SFP+ Optical single transceiver. It is a small form-factor pluggable transceiver and is designed for use in 10 Gigabit Ethernet connection for a distance of up to 20km over a single SFP+ Module.

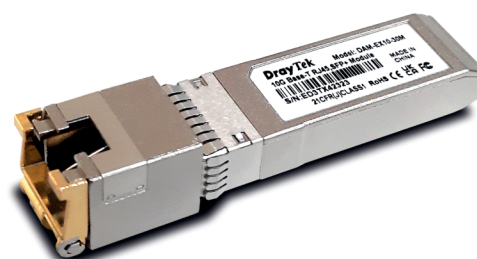
DAM-FX10-20K Series provides a high-performance and cost-effective solution, which is ideal for long-distance fiber connectivity. It is available in 2 types, **DAM-FX10-20K-A** (Type A) and **DAM-FX10-20K-B** (Type B).



DAM-EX10-30m

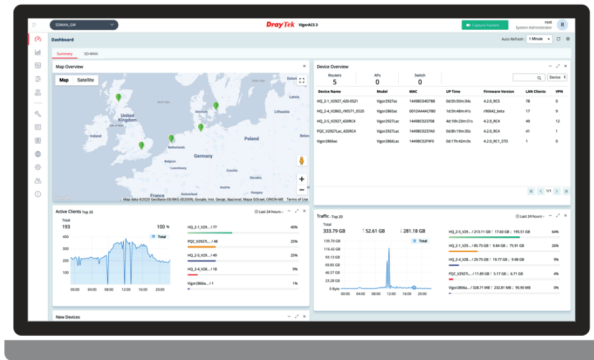
10G Base-T RJ45 SFP+ Module

DAM-EX10-30m transceiver is a compact pluggable SFP+ transceiver that supports multiple connectivity options, including 1G BASE-T, 2.5G BASE-T, 5G BASE-T, and 10G BASE-T. Its Hot-Pluggable SFP+ Footprint feature ensures easy installation. This transceiver is suitable for distances up to 30 meters over Cat 5e/Cat 6a copper cables via RJ-45 connector, providing a cost-effective solution for enterprises to establish connections within racks or other copper interfaces.



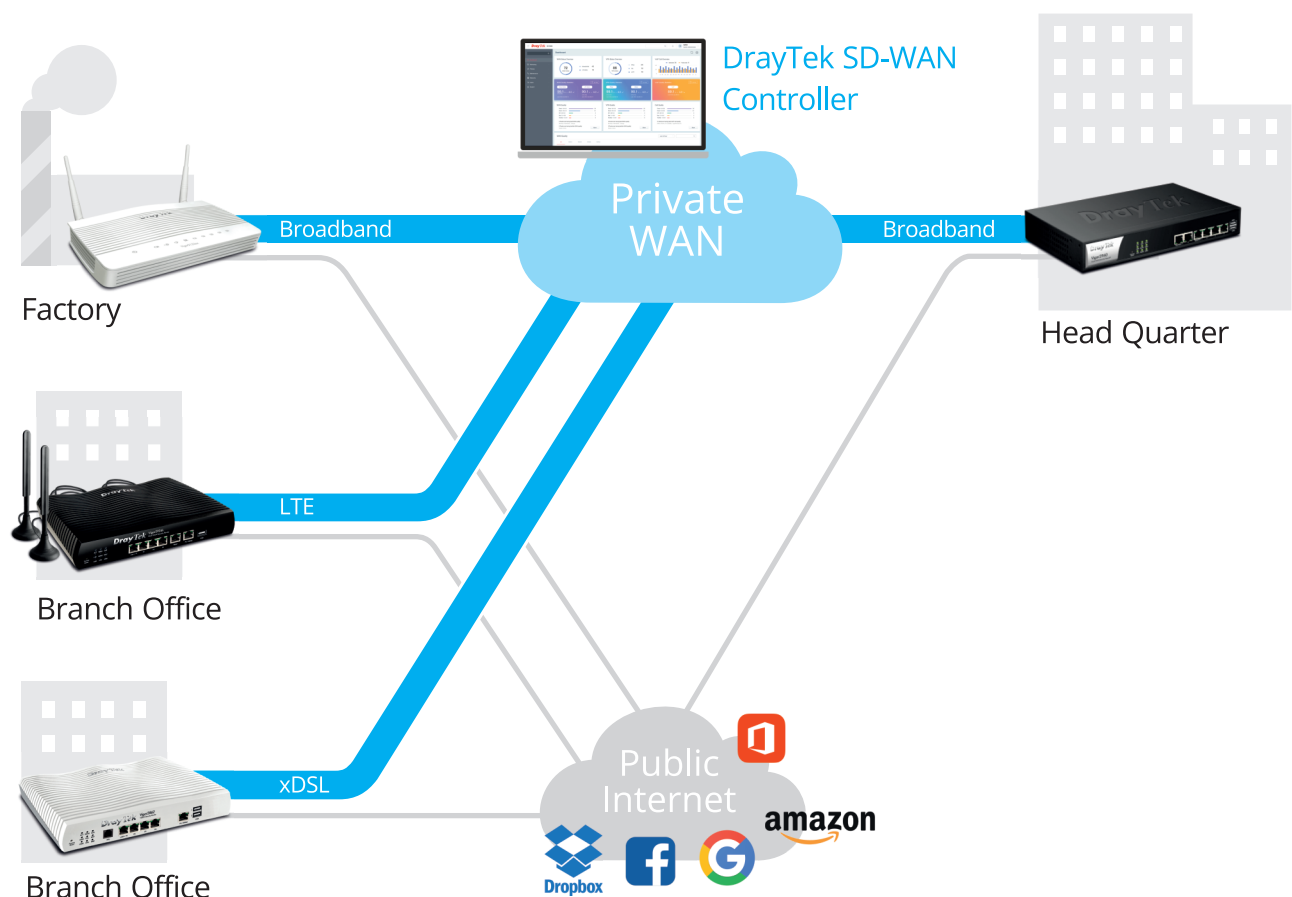
VigorACS 3

NMS for Vigor Devices and SD-WAN Orchestrator



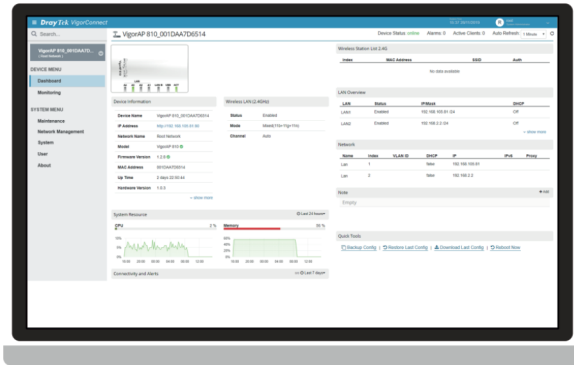
- Zero Touch Deployment and Provisioning
- Auto-VPN for Hub-and-Spoke or Mesh Topology
- Interface Quality and SLA
- VoIP Optimization and Monitoring
- Application Visibility
- Application-Based SD-WAN Policy
- Customized Hotspot Page with Multilingual
- Hotspot Clients Analytics
- ACS Server Load Balancing / Failover

SD-WAN Solution



VigorConnect

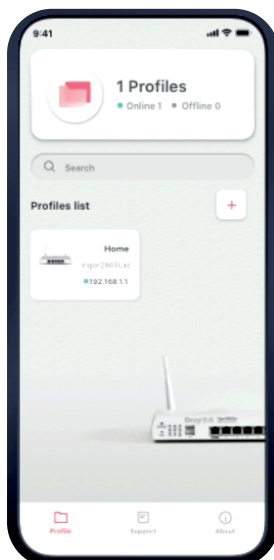
Local Network Management Software for DrayTek Devices



- Automatically discover all VigorAPs/VigorSwitches on your LAN and manage up to 100 devices
- Provision AP profile to APs in a network to set up several VigorAPs; setup the VLAN or PoE for selected Switches
- Get notified when an AP/Switch lost connection with the VigorConnect Server
- Network insights about AP, client, and CPU usage, etc. over a specified period
- Schedule an off-hour firmware upgrade or configure backup/restore

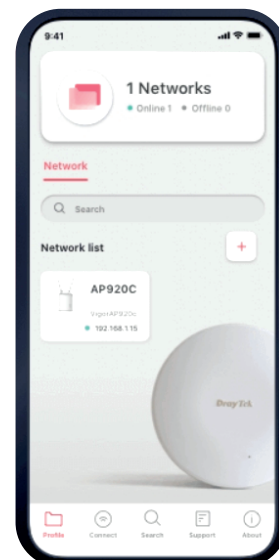
DrayTek Router App

- Work with Vigor Router Series
- Setup major Router functions
- Parental control by content/time



DrayTek Wireless App

- Work with VigorAP Series
- Setup Mesh/Wi-Fi
- Parental control by time



DrayTek URL Reputation

Threat Intelligence Service

DrayTek's URL service is a new level of protection against online threats using cloud-based technology that updates every 5 minutes to keep the network safe. This service adds an extra layer of security protection to LAN client for their online activities. There are 82 categories in total, 10 of which are security-focused, providing comprehensive and up-to-date protection to your network.



DrayTek Rack-mount Plate

The rack mount brackets is used for mounting the router onto a 19" standard rack.

Suitable for:

- Vigor2862 serie
- Vigor2865 serie
- Vigor2865 L serie
- Vigor2866 serie
- Vigor2866 L serie
- Vigor2927 serie
- Vigor2927 F serie
- Vigor2927 L serie



USB Thermometer

Temperature Sensor for DrayTek routers

- Direct router/AP connection
- Outer sensor included (1M)
- Data is displayed in °F or °C
- Informative Web Interface
- Alarm Max/Min Thresholds
- Continuous Reporting to syslog
- Email & SMS Reporting on threshold breach
- RoHS Compliant



Antenna Series



ANT-1205	
Description	2.4GHz/5GHz Indoor Omni-Directional Antenna
Environment	Indoor
Frequency Range	2400~2500 MHz 5150~5850 MHz
Peak Gain @ 2.4GHz @ 5GHz	5 dBi 4.5 dBi
VSWR @ 2.4GHz @ 5GHz	< 2.0 < 2.0
Polarization	Linear
HPBW/Horizontal @ 2.4GHz @ 5GHz	
HPBW/Vertical @ 2.4GHz @ 5GHz	
Power Handling	1W
Impedance	50 Ω
Connector	RP SMA Plug

Feature Matrix

Broadband Router

		Vigor2135 series					Vigor2136 series		
		2135	2135ac	2135ax	2135Vac	2135FVac	2136	2136ax	2136Vax
WAN	Fixed WAN	1 x GbE			1 x SFP	1 x 2.5GbE			
	Switchable WAN/LAN						1 x 2.5GbE		
LAN	Fixed LAN	4 x GbE				3 x GbE			
	LAN Subnet	4				4			
	DMZ Port								
USB Port		2				2			
WLAN	Standard		11a/b/g/n/ ac wave 2	11a/b/g/n/ ac wave 2/ax	11a/b/g/n/ac Wave 2		11a/b/g/n/ ac wave 2/ax		
	2.4GHz			•			•		
	5GHz			•			•		
	Mesh			•			•		
VPN	Max. VPN	2				4			
	Max. SSL VPN	2							
	VPN Matcher	•							
Routing	Static Route	•				•			
	Policy Route	•				•			
	RIP	•				•			
	BGP					•			
	OSPF					•			
Content Filter	APP, Web Category, DNS Keyword	•				•			
	URL Keyword	•				•			
NAT Sessions		50K				50K			
Bandwidth Management		•				•			
DrayDDNS		•				•			
VoIP					•			•	
VPN Management									
AP Management		2				9			
Switch Management							5		

Vigor2136 series		Vigor2927 series				Vigor2962	Vigor3912 series
2136FVax	2136FV	2927	2927ac	2927ax	2927Vac	2962	3912/S
1 x SFP		1 x GbE					
1 x 2.5GbE		1 x GbE				1x 2.5GbE + 2x GbE + 1x GbE/SFP Combo	2 x 2.5GbE + 4x GbE + 2x SFP+
3 x GbE		5 x GbE				2 x GbE	4 x GbE
4		8				20	100
		1					
2		2				2	2
11a/b/g/n/ ac wave 2/ax			11a/b/g/n/ ac wave 2	11a/b/g/n/ ac wave 2/ax	11a/b/g/n/ ac wave 2		
•				•			
•				•			
•				•			
4		50				200	500
		25				50	200
		•				•	•
•		•				•	•
•		•				•	•
•		•				•	•
•		•				•	•
•		•				•	•
•		•				•	•
•		•				•	•
•		•				•	•
•		•				•	•
50K		60K				300K	1000K
•		•				•	•
•		•				•	•
•					•		
		8					
9		20				50	50
5		10				30	30

Feature Matrix

xDSL Router

		Vigor160 series	
		166	167
WAN	Fixed WAN Port	1 x ADSL/VDSL /35b/G.Fast	1 x ADSL/VDSL /35b
	WAN/LAN Switchable Port		
LAN	Fixed LAN Port	2 x GbE	
	LAN Subnet	1	
	DMZ Port		
USB Port			
WLAN	Standard		
	2.4GHz		
	5GHz		
	Mesh		
VPN	Max. VPN		
	Max. SSL VPN		
	VPN Matcher		
Routing	Static Route		•
	Policy Route		
	RIP		•
	BGP		
	OSPF		
Content Filter	APP, Web Category, DNS Keyword		
	URL Keyword	•	
NAT Sessions		10K	
Bandwidth Management			
DrayDDNS			
VoIP			
VPN Management			
AP Management			
Switch Management			

Vigor2765 series				Vigor2766 series	
2765	2765ac	2765ax	2765Vac	2766	2766ac
1 x ADSL/VDSL/35b				1 x ADSL/VDSL/35b/G.Fast	
1 x GbE				1 x GbE	
3 x GbE				3 x GbE	
4				4	
2				2	
	11a/b/g/n/ ac wave 2	11a/b/g/n/ ac wave 2/ax	11a/b/g/n/ ac wave 2		11a/b/g/n/ ac wave 2
		•			•
		•			•
		•			•
2				2	
2				2	
•				•	
•				•	
•				•	
•				•	
•				•	
•				•	
•				•	
•				•	
50K				50K	
•				•	
•				•	
			•		
2				2	

Feature Matrix

xDSL Router

		Vigor2767 series			Vigor2865 series		
		2767	2767ax	2767Vax	2865	2865ax	2865Vac
WAN	Fixed WAN Port	1 x ADSL/VDSL/35b			1 x ADSL/VDSL/35b		
	WAN/LAN Switchable Port	1 x 2.5GbE			1 x GbE		
LAN	Fixed LAN Port	3 x GbE			5 x GbE		
	LAN Subnet	4			8		
	DMZ Port				1		
USB Port		2			2		
WLAN	Standard		11a/b/g/n/ ac wave 2/ax			11a/b/g/n/ ac wave 2/ax	
	2.4GHz		•			•	
	5GHz		•			•	
	Mesh		•			•	
VPN	Max. VPN	4			32		
	Max. SSL VPN				16		
	VPN Matcher				•		
Routing	Static Route		•			•	
	Policy Route		•			•	
	RIP		•			•	
	BGP		•			•	
	OSPF		•				
Content Filter	APP, Web Category, DNS Keyword		•			•	
	URL Keyword		•			•	
NAT Sessions		50K			60K		
Bandwidth Management		•			•		
DrayDDNS		•			•		
VoIP			•			•	
VPN Management					8		
AP Management		9			20		
Switch Management		5			10		

PON Router

		Vigor1100 series
		1100ax
WAN	Fixed WAN Port	1 x GPON
	WAN/LAN Switchable Port	1 x GbE
LAN	Fixed LAN Port	3 x GbE
	LAN Subnet	4
	DMZ Port	
USB Port		1
WLAN	Standard	11a/b/g/n/ac/ax
	2.4GHz	●
	5GHz	●
	Mesh	
VPN	Max. VPN	2
	Max. SSL VPN	
	VPN Matcher	
Routing	Static Route	●
	Policy Route	●
	RIP	●
	BGP	●
	OSPF	●
Content Filter	APP, Web Category, DNS Keyword	●
	URL Keyword	●
NAT Sessions		50K
Bandwidth Management		●
DrayDDNS		●
VoIP		
VPN Management		
AP Management		
Switch Management		

Feature Matrix

Cellular Router

		Vigor2620 LTE series		Vigor2865L series				Vigor2866L series
		2620L	2620Ln	2865L	2865Lac	2865L-5G	2865Lax-5G	2866Lac
WAN	Fixed WAN Port	1 x ADSL/VDSL + 1 x LTE		1 x ADSL/VDSL/35b + 1 x LTE				1 x ADSL/VDSL/35b/ G.Fast + 1 x LTE
	WAN/LAN Switchable Port	1 x GbE		1 x GbE				1 x GbE
LAN	Fixed LAN Port	1 x GbE		5 x GbE				5 x GbE
	LAN Subnet	2		8				8
	DMZ Port			1				1
USB Port				1				1
WLAN	Standard		11b/g/n		11a/b/g/n/ ac wave 2		11a/b/g/n/ ac wave 2/ax	11a/b/g/n/ ac wave 2
	2.4GHz		•		•		•	•
	5GHz				•		•	•
	Mesh				•		•	•
VPN	Max. VPN	2		32				32
	Max. SSL VPN	2		16				16
	VPN Matcher	•		•				•
Routing	Static Route	•		•				•
	Policy Route	•		•				•
	RIP	•		•				•
	BGP	•		•				•
	OSPF							
Content Filter	APP, Web Category , DNS Keyword	•		•				•
	URL Keyword	•		•				•
NAT Sessions		30K		60K				60K
Bandwidth Management		•		•				
DrayDDNS		•		•				•
VoIP								
VPN Management				8				8
AP Management		2		20				20
Switch Management				10				10

Vigor2927L series			
2927L	2927Lac	2927L-5G	2927Lax-5G
1 x GbE + 1 x LTE			
1 x GbE			
5 x GbE			
8			
1			
1			
	11a/b/g/n/ ac wave 2		11a/b/g/n/ ac wave 2/ax
	•		•
	•		•
	•		•
50			
25			
•			
•			
•			
•			
•			
•			
•			
•			
•			
60K			
•			
•			
8			
20			
10			

Feature Matrix

Access Point

		VigorAP 805	VigorAP 903	VigorAP 906	VigorAP 912C	VigorAP 962C	VigorAP 1062C
		805	903	906	912C	962C	1062C
Band	2.4GHz	•	•	•	•	•	•
	5GHz	•	•	•	•	•	•
Max. Link Rate (Mbps)		574+2402	400+867	574+2402	300 + 867	574+2402	1200+4800
Max. Clients (per band)		256 (128)	128 (64)	254 (127)	256 (128)	256 (128)	256 (128)
Environment		Indoor	Indoor	Indoor	Indoor	Indoor	Indoor
Port	1 GbE	1	5	5	1		
	2.5 GbE	1				1	1
USB Port			1				
Power Input		DC	DC / PoE	DC / PoE	DC / PoE	DC / PoE	DC / PoE
PoE Out							
Antenna		2 x 3 Internal	2 x 2 External	2 x 2 External	2 x 2 Internal	2 x 3 Internal	4 x 4 Internal
Mounting (Desk/Wall/Ceiling/Pole)		D/W	D/W	D/W	C/W	C/W	C/W
Wi-Fi Standard		11a/b/g/n/ ac wave 2/ax	11a/b/g/n/ ac wave 2	11a/b/g/n/ ac wave 2/ax	11a/b/g/n/ ac wave 2	11a/b/g/n/ ac wave 2/ax	11a/b/g/n/ ac wave 2/ax
AP-Assisted Roaming		•	•	•	•	•	•
AirTime Fairness		•	•	•	•	•	•
Band Steering		•	•	•	•	•	•
Max. Number of SSID (per band)		16 (8)	8 (4)	8 (4)	8 (4)	8 (4)	16 (8)
802.1q tag-based VLAN		•	•	•	•	•	•
Built-in RADIUS Server		•	•	•	•	•	•
Stand-alone Operation		•	•	•	•	•	•
Mesh		Root, Node	Root, Node	Root, Node	Root, Node	Root, Node	Root, Node
VigorRouter Mgmt. (APM)		•	•	•	•	•	•

VigorAP 918R series	
918R	918RPD
•	•
•	•
400 + 867	400 + 867
256 (128)	256 (128)
Outdoor	Outdoor
1	2
PoE	PoE
	•
2 x 2 External	2 x 2 External + Internal
W/P	W/P
11a/b/g/n/ ac wave 2	11a/b/g/n/ ac wave 2
•	•
•	•
•	•
8 (4)	8 (4)
•	•
•	•
•	•
Root, Node	Root, Node
•	•

Feature Matrix

Switch

		Smart Lite	Web Smart			L2+ Managed		
		G1080	G1282	P1282	P1281x	G2100	P2100	FX2120
Ports	RJ-45	8 x GbE	24 x GbE	24 x GbE	24 x GbE	8 x GbE	8 x GbE	
	SFP				4 (SFP+)	2	2	12 (SFP+)
	SFP/GbE Combo		4	4				
	Console					•	•	•
PoE	Ports			24 PoE+	24 PoE+		8 PoE+	
	Power Budget (watts)			400	140		140	
LAN	Spanning Tree		STP, RSTP	STP, RSTP	STP, RSTP	STP, RSTP, MSTP	STP, RSTP, MSTP	STP, RSTP, MSTP
	ONVIF Surveillance		•	•	•	•	•	•
VLAN	Tag-Based	•	•	•	•	•	•	•
	MAC-Based		•	•	•	•	•	•
	Voice & Surveillance VLAN		•	•	•	•	•	•
	GVRP					•	•	•
	QinQ (Basic)					•	•	•
Layer3 Features	Static Route					•	•	•
	VLAN Route					•	•	•
	DHCP Server					•	•	•
Multicast	IGMP Snooping	v2	v2, v3(BISS)	v2, v3(BISS)	v2, v3(BISS)	v2, v3(BISS)	v2, v3(BISS)	v2, v3(BISS)
	IGMP Querier		•	•	•	•	•	•
Security	IP Conflict Prevention		•	•	•	•	•	•
	IPSG		•	•	•	•	•	•
	Access Control		•	•	•	•	•	•
	DAI					•	•	•
	DHCP Snooping					•	•	•
Management	sFlow							•
	SNMP		v1/v2c/v3	v1/v2c/v3	v1/v2c/v3	v1/v2c/v3	v1/v2c/v3	v1/v2c/v3
	LLDP		•	•	•	•	•	•
	SWM	•	•	•	•	•	•	•

L2+ Managed					
Q2121x	PQ2121x	Q2200x	PQ2200xb	G2282x	P2282x
8 x 2.5GbE	8 x 2.5GbE	16 x 2.5GbE	16 x 2.5GbE	24 x GbE	24 x GbE
4 (SFP+)	4 (SFP+)	4 (SFP+)	4 (SFP+)	4 (SFP+)	4 (SFP+)
•	•	•	•	•	•
	8 PoE+		4 PoE++ & 12 PoE+		24 PoE+
	140		400		400
STP, RSTP, MSTP	STP, RSTP, MSTP	STP, RSTP, MSTP	STP, RSTP, MSTP	STP, RSTP, MSTP	STP, RSTP, MSTP
•	•	•	•	•	•
•	•	•	•	•	•
•	•	•	•	•	•
•	•	•	•	•	•
•	•	•	•	•	•
•	•	•	•	•	•
•	•	•	•	•	•
•	•	•	•	•	•
•	•	•	•	•	•
•	•	•	•	•	•
•	•	•	•	•	•
•	•	•	•	•	•
v2, v3(BISS)	v2, v3(BISS)	v2, v3(BISS)	v2, v3(BISS)	v2, v3(BISS)	v2, v3(BISS)
•	•	•	•	•	•
•	•	•	•	•	•
•	•	•	•	•	•
•	•	•	•	•	•
•	•	•	•	•	•
•	•	•	•	•	•
•	•	•	•	•	•
•	•	•	•	•	•
v1/v2c/v3	v1/v2c/v3	v1/v2c/v3	v1/v2c/v3	v1/v2c/v3	v1/v2c/v3
•	•	•	•	•	•
•	•	•	•	•	•

Switch

		L2+ Managed			
		Q2300x	PQ2300xb	G2540x	P2540xs
Ports	RJ-45	24 x 2.5GbE	24 x 2.5GbE	48 x GbE	48 x GbE
	SFP	6 (SFP+)	6 (SFP+)	6 (SFP+)	6 (SFP+)
	SFP/GbE Combo				
	Console	•	•	•	•
PoE	Ports		8 PoE++ & 16 PoE+		48 PoE+
	Power Budget (watts)		400		400/720
LAN	Spanning Tree	STP, RSTP, MSTP	STP, RSTP, MSTP	STP, RSTP, MSTP	STP, RSTP, MSTP
	ONVIF Surveillance	•	•	•	•
VLAN	Tag-Based	•	•	•	•
	MAC-Based	•	•	•	•
	Voice & Surveillance VLAN	•	•	•	•
	GVRP	•	•	•	•
	QinQ (Basic)	•	•	•	•
Layer3 Features	Static Route	•	•	•	•
	VLAN Route	•	•	•	•
	DHCP Server	•	•	•	•
Multicast	IGMP Snooping	v2, v3(BISS)	v2, v3(BISS)	v2, v3(BISS)	v2, v3(BISS)
	IGMP Querier	•	•	•	•
Security	IP Conflict Prevention	•	•	•	•
	IPSG	•	•	•	•
	Access Control	•	•	•	•
	DAI	•	•	•	•
	DHCP Snooping	•	•	•	•
Management	sFlow	•	•	•	•
	SNMP	v1/v2c/v3	v1/v2c/v3	v1/v2c/v3	v1/v2c/v3
	LLDP	•	•	•	•
	SWM	•	•	•	•

DrayTek

www.draytek.com

Tel: +886-3-5972727 Fax: +886-3-5972121 E-mail: info@draytek.com

Trademarks and brand names are the properties of their respective owners.

The scope of delivery and other details are subject to change without prior notice.

Copyrights © DrayTek Corp. All right reserved.

V.1.0.0